

# FIGURES / DRAWINGS

## INSTALLATION:

Effectiveness as a safety accessory depends entirely on secure installation.

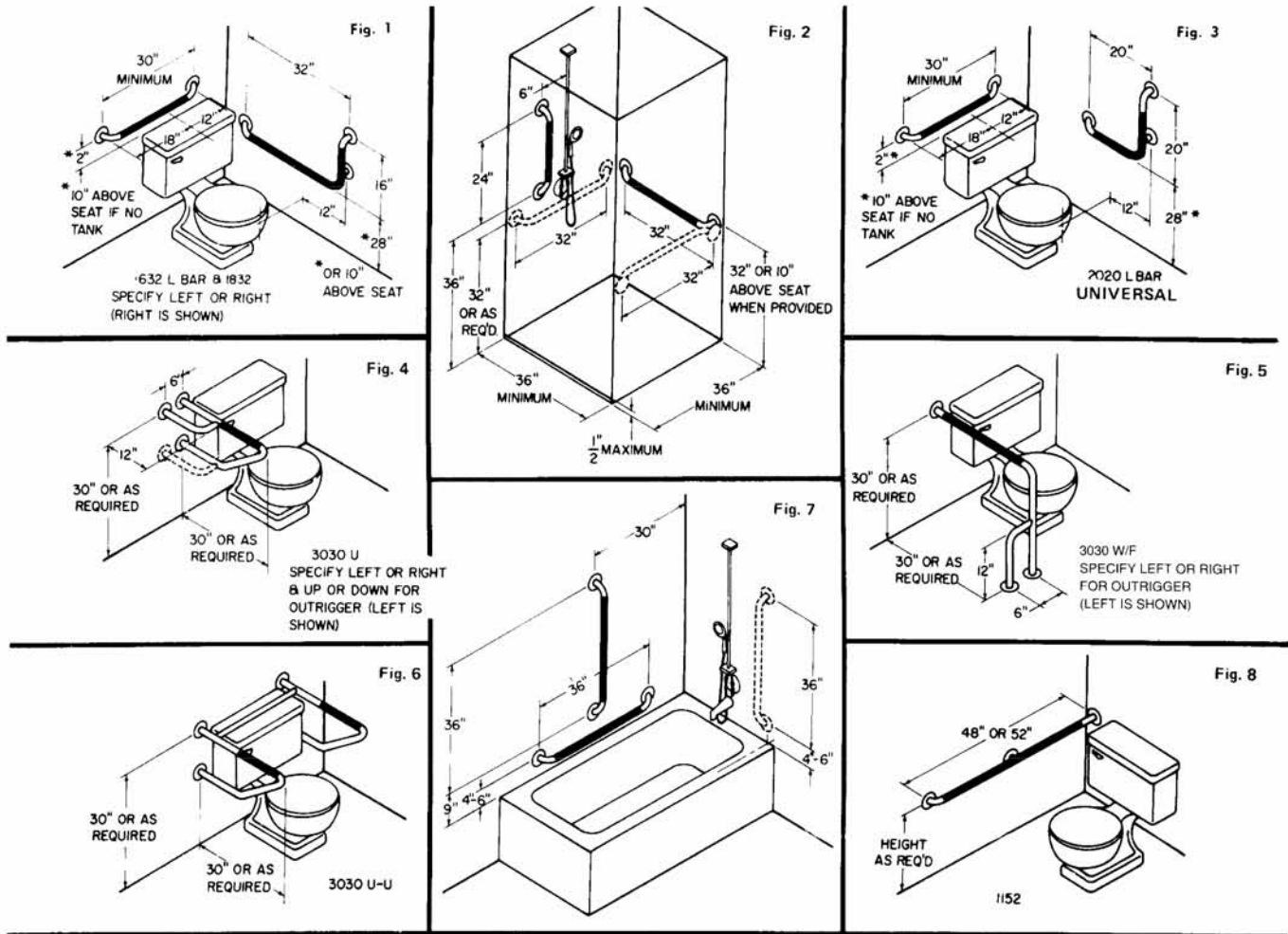
In-wall backing is required for all grab bar installation.

Maximum safety depends on both a high quality grab bar and an appropriate anchoring device to suite the specific wall condition.

Safe T Bar, Inc. grab bars exceed all federal agencies' requirements and ADA (American Disability Act) codes. (Building codes may vary state to state, please check with your local building codes.)

We will custom manufacture safety bars to meet special requirements.

1. The safety grab bars indicated by dotted lines are recommended for best assistance, but are not required. Figures 2 & 7
2. Figures 1 & 3 shown are for lateral transfers where open toilet rooms exist.
3. Toilet room stalls must have front of water closet and have 36" between partitions. Door width minimum is 32" wide.



This installation is one we have found to be helpful for those only needing some assistance, in private homes. This is not a Federal accessibility standard.

1632 or 1832  
Specify Left or Right  
Left Hand is shown



## TUB RAILS

24" x 48" } Standard  
36" x 48" }

